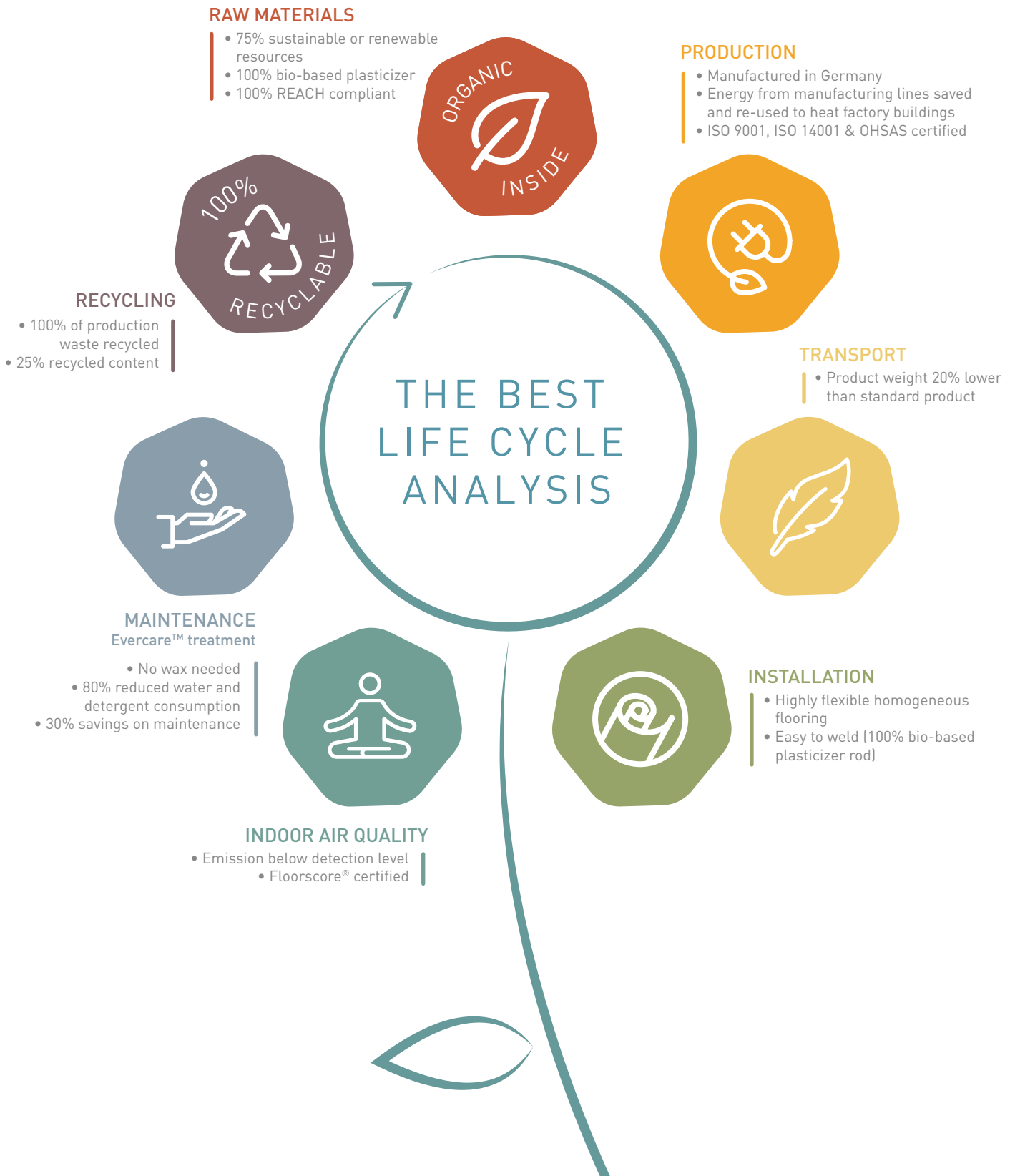


MIPOLAM SYMBIOZ™

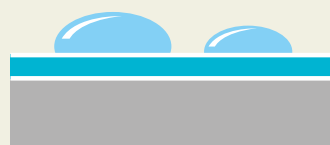




Exclusive Patented Technology by Gerflor:
Easy Maintenance proven by Experience
3 main benefits:

1 STAIN SHIELD, BLOCKS EVEN THE TOUGHEST STAINS

Gerflor floor covering with **EVERCARE™**



The **EVERCARE™** water-repellent effect prevents staining products from penetrating the materials (alcohol-based Eosin and Betadine, hydro-alcoholic gels, etc.), remaining on the surface.

Other floor covering



All other product on the market let staining product penetrate the floor covering.

Marker / Eosin / Betadine



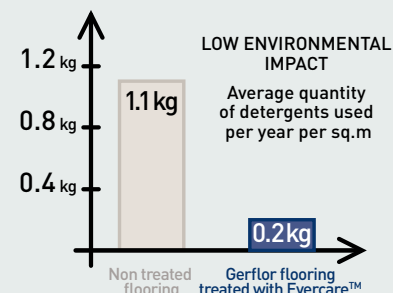
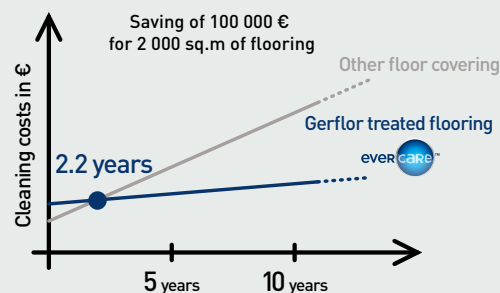
STAINING TESTS



AFTER CLEANING

2 NO WAX REQUIRED = SAVED WATER AND DETERGENT

10x less cleaning products to maintain Gerflor floor coverings compared with a non-treated floor covering.



3 MATT EFFECT FOR A MODERN LOOK

MIPOLAM SYMBIOZ™

MIPOLAM SYMBIOZ™

DESCRIPTION

Total thickness	EN ISO 24346 (EN 428)	mm	2.00
	ASTM F386-02	inch	0.08
Weight	EN ISO 23997 (EN 430)	g/sq.m	2580
Width/length of sheet	EN ISO 24341 (EN 426)	cm / lm	200/20
	-	feet - inch	6'6" / 66'
Coverage / roll	-	sq.ft	430.56
	-	sq.m	40

CLASSIFICATION

Norm/product specification	-	-	EN ISO 10581 (EN 649)
	ASTM F 1913-04	-	compliant
European classification	EN ISO 10874 (EN 685)	class	34-43
Fire rating	EN 13501-1	class	Bfl - s1
	ASTM E648-08	class	Class I
	CAN/ULC S102.2	-	tested in accordance
Static electrical propensity	EN 1815	kV	< 2

PERFORMANCES

Wear resistance	EN 660.2	mm ³	≤ 2.0
Wear group	NF 189	group	T
Type binder content	ISO 10581	type	I
Dimensional stability	EN ISO 23999 (EN 434)	%	≤ 0.40
Impact sound insulation	EN ISO 717-2	dB	5
Residual indentation	EN ISO 24343-1 (EN 433)	mm	~ 0.02
Castor chair test (Type W)	ISO 4918 (EN 425)	-	OK
Thermal conductivity	EN ISO 10456 (EN 12 524)	W/(m.K)	0.25
Colour fastness	EN 20 105 - B02	degree	≥ 6
Surface treatment	-	-	Evercare™
Chemical products resistance	EN ISO 26987 (EN 423)	class	OK
Anti-bacterial activity (E. coli - S. aureus - MRSA)*	ISO 22196	-	> 99 % inhibits growth

ENVIRONMENT/INDOOR AIR QUALITY

TVOC after 28 days	ISO 16000-6	µg/ m ³	< 10
Certification	-	-	Floorscore®

CE MARKING

CE	EN 14041	-	
	-	-	

* The implementation of an effective cleaning method is the best defence against infection

Installation and Maintenance Guidelines, Complementary ranges available on our Gerflor website.

Rubber leaves indelible stains on vinyl floorings: do not use mats with rubber backing and replace tubular furniture feet with those made of PVC or polyamide. Place mats of sufficient length at entrances to reduce outside sources of dirt.

IMPORTANT: The information contained in this document is valid from 01/03/2019 and is subject to change at any time without notice. In the context of constantly changing technology, our customers are responsible, prior to any use, for checking with us that this document is the version in force.

Product description and technical data sheet available in various languages. See our Gerflor Country websites.